

Siebreflektor $\varnothing 36.5$ mm



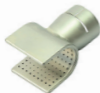
107.309

20 x 35 mm, 75° abgewinkelt



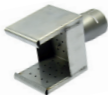
107.308

34 x 50 mm, 78° abgewinkelt



112.068

34 x 50 mm, gerade



127.137

60 x 80 mm, gerade

Siebreflektor (Brause) \varnothing 36.5 mm



107.318

\varnothing 65 mm, gerade



107.319

\varnothing 65 mm, gerade,
ohne Klemmen
